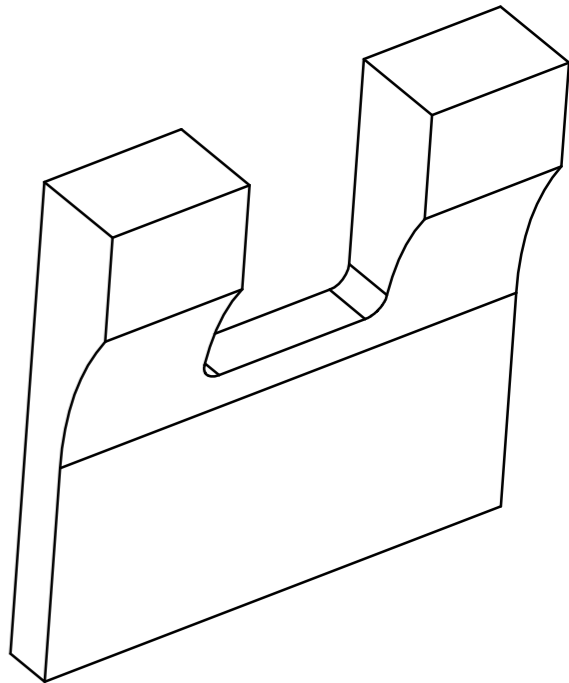
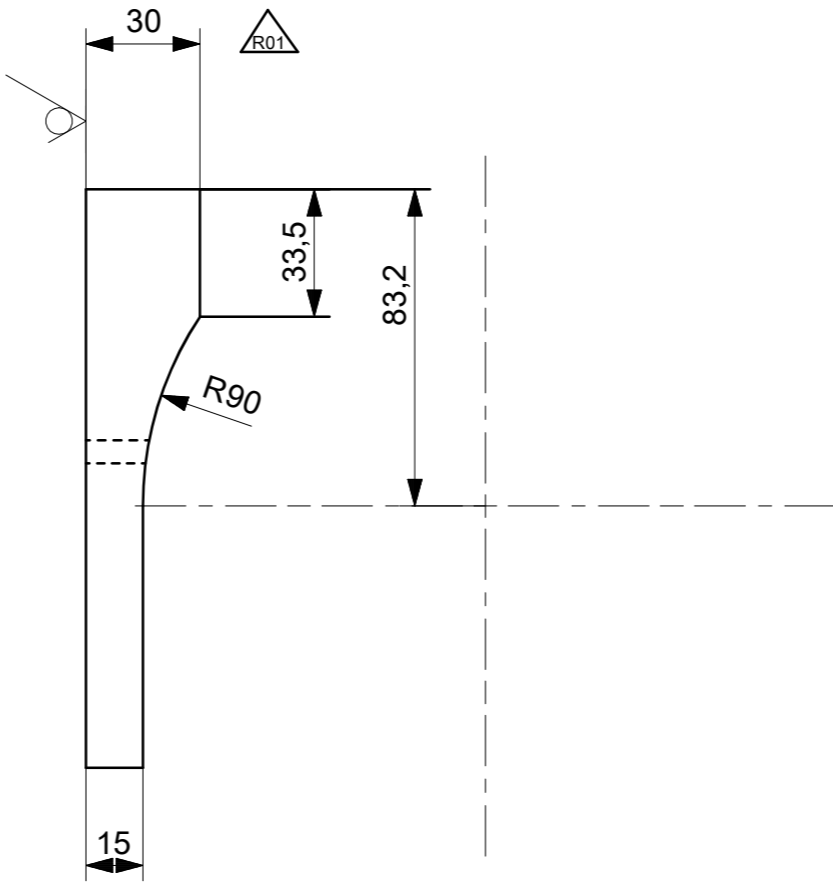
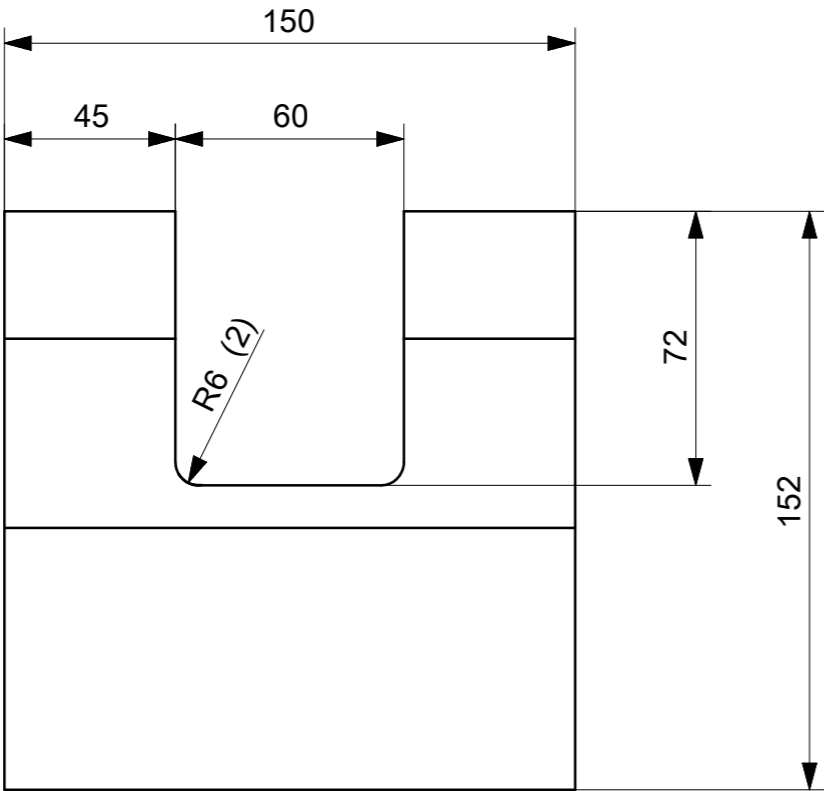


ISO 13920 Welded Construction	<1000	6,0	0,8
	<630	4,0	0,7
	<400	3,0	0,6
	<250	3,0	0,4
	100	2,0	0,3
	40	1,5	0,2
ISO 2768 General Tolerance	L mm	Raw	Form
	Nom. Size	Class	
	<4000	2,0	0,4
	<2000	1,2	0,4
	<1000	0,8	0,3
	<400	0,5	0,3
TS 12708 Steel Casting	30-120	0,3	0,2
	2-30	0,2	0,1
	L mm	m ±	K ±
	Nom. Size	Class	
	>20000	9,0	8,0
	<20000	8,0	7,0
ISO 2768 General Tolerance	<16000	7,0	6,0
	<12000	6,0	5,0
	<8000	5,0	4,0
	<4000	4,0	3,0
	<2000	3,0	2,0
	<1000	2,0	1,5
ISO 13920 Welded Construction	<400	1,0	1,0
	30-120	1,0	0,5
	2-30	1,0	0,5
	L mm	A ±	E ±
	Nom. Size	Class	
	>20000	9,0	8,0

STEEL SHEETS NOTES:	
Thermal cutting - Classification of thermal cuts - Geometrical product specification and quality tolerances According to EN ISO 9013 - 231	
Hot-rolled steel plates 3 mm thick or above - Tolerances on dimensions and shape According to EN10029 - B	

Technical Specifications					
Technical Document No.					
Fixture/Mould Asset ID.					
Coating/Heat Tre./Roughness		R01	Thickness increased by 5 mm	22/07/2024	T.ŞABA
Paint/Color		Mod. No	Modification Description	Date	Sign



NOT DIMENSIONED RADIUS R=2 Edge without dimension according to DIN ISO 13715

<div><div></div><div>Ra 12.5</div></div>		<div><div>(</div><div><div></div><div>✓</div></div><div>)</div></div>		<div><div></div><div>-0.3</div></div> <div><div></div><div>+0.3</div></div>	
				S355J2 EN 10025	2.6
Item No	Designation Name of Item	Qty.	Standard Identification No Company	Material Company Code	Dimension Weight (Kg)
TYP	ISO 21920-1	ISO 8015	ISO 2553	General Tol.	ISO 2768 f <input type="checkbox"/> m <input checked="" type="checkbox"/> H <input type="checkbox"/> K <input checked="" type="checkbox"/>
	EN 15085-2 Certification Level		CL1 <input type="checkbox"/> CL2 <input type="checkbox"/> CL3 <input type="checkbox"/>	Weld Prod.	ISO 13920 A <input checked="" type="checkbox"/> B <input type="checkbox"/> E <input checked="" type="checkbox"/> F <input type="checkbox"/>
				Cast Steel	TS 12708 Lm2 <input type="checkbox"/> Lr2 <input type="checkbox"/> Sm2 <input type="checkbox"/> Sr2 <input type="checkbox"/>
	Approved	P.FARINA		Scale	<div><div>TURASAS</div><div>Turkish Railway Vehicles Industry Inc.</div></div>
	Checked	M.BORLO		1 : 2	
	Prepared	E.PINTUS			
	<div><div></div><div></div></div>		Plate		
	Date:		Parts List No:		Sheet: 1/1